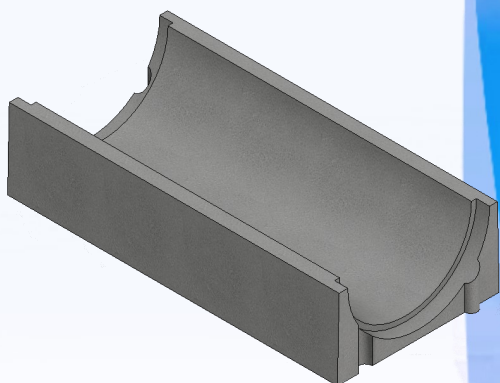




**BCI ALGÉRIE**  
Certification ISO 9001



**HALF-NOZZLE**



**SAPCI**  
*Depuis 1969*

**SAPCI est votre partenaire  
sur chantier pour tous vos travaux  
en Béton prêt à l'emploi**

Unité de Production BPE  
Ouled Heddadj 35052  
W.Boumerdès  
Mob.: 0560 02 57 85

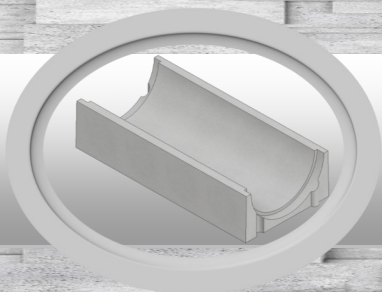


**BÉTON PRÊT A L'EMPLOI**

**Centre de production de BPE  
Ouled Heddadj**



**SAPCI votre partenaire depuis 1969**  
[www.sapci-dz.com](http://www.sapci-dz.com)

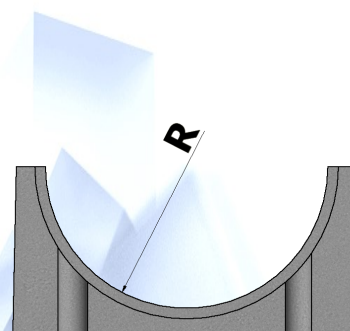
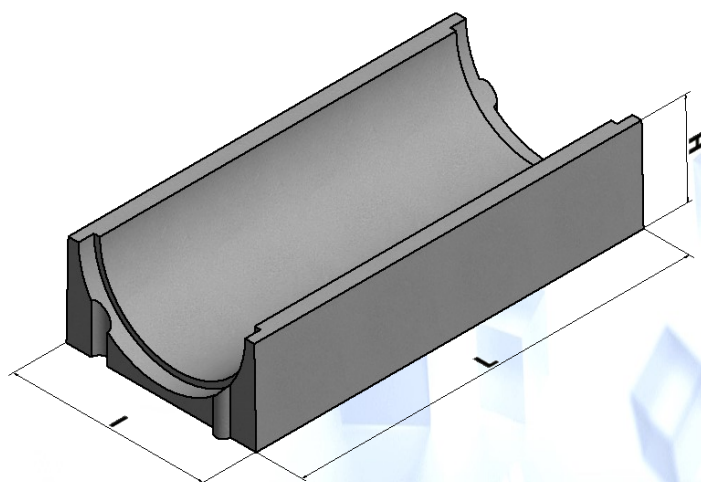


# HALF-NOZZLE

Désignation	Dimension in cm				Unit weight In kg	Class of concrete MPA
	R	H	I	L		
Half-nozzle	20	24	49	100	127	25

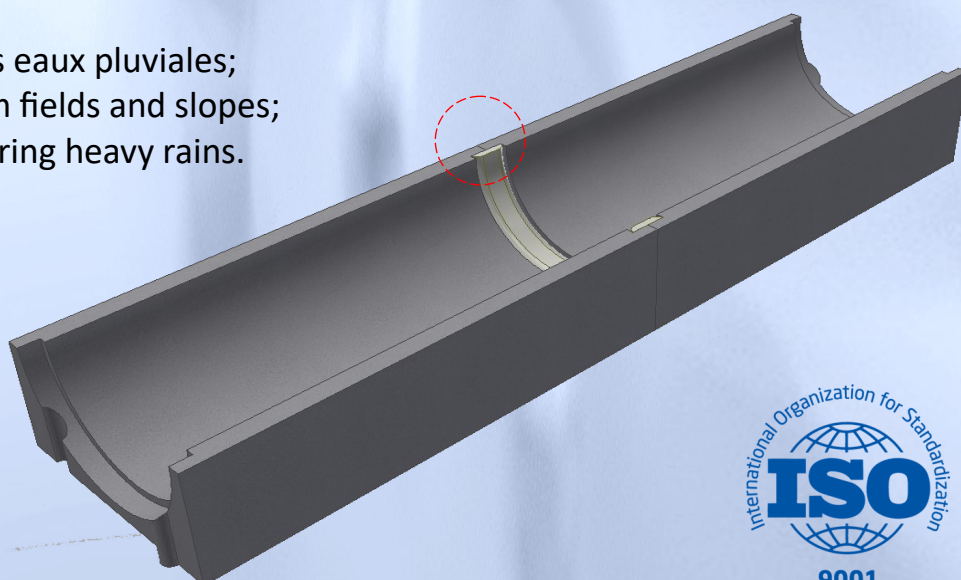
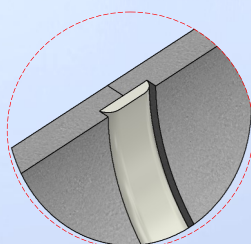


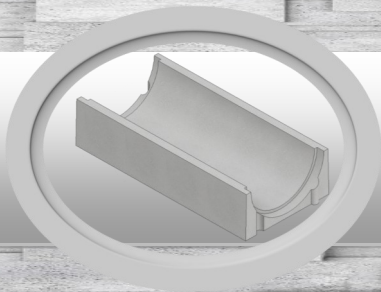
## Half-nozzle



Prefabricated reinforced concrete, the half-nozzles are designed essentially for:

- Recueillir et canaliser les eaux pluviales;
- Drain surface water from fields and slopes;
- Fight against gullyng during heavy rains.





# HALF-NOZZLE



BCI ALGÉRIE  
Certification ISO 9001



## Product advantages:

- Quick and easy implementation;
- Quick and easy implementation; Accuracy of installation thanks to its male / female interlocking system;
- Strong lateral stability.
- Reduced maintenance.

